

MENUS news

CFLs Are More Than Just Energy Efficient

Compact fluorescent light bulbs are often mentioned as one of the easiest ways to shrink your power bill and your carbon footprint. They present the perfect green-green situation: **saving money and helping the environment.**

CFLs have many benefits when compared to the incandescent bulb:

Efficiency

CFLs are four times more efficient and last up to 10 times longer than incandescent light bulbs. A 22 watt CFL has about the same light output as a 100 watt incandescent. Compact fluorescent light bulbs use 50 - 80% less energy than incandescent light bulbs.

Savings

Although initially more expensive, you save money in the long run because CFLs use 1/3 the energy and last up to 10 times as long as incandescents. At 8 cents per kWh, a single 18 watt CFL used in place of a 75 watt incandescent will save about \$45.

Pollution Reduction

By replacing a single incandescent bulb with a CFL you can keep a half-ton of CO₂ out of the atmosphere over the life of the bulb. If everyone in the U.S. used energy-efficient lighting, we could retire 90 average size power plants.



Inside This Issue

In The Community

Follow Us on Twitter

Getting To Know Us: Kelly Green

Energy Tip: Save On Cooling Costs

Look Up When Planting Trees

Emergency Numbers

Employee Anniversaries

Office Closings

High-Quality Light

Newer Compact fluorescent light bulbs give a warm, inviting light instead of the "cool white" light of older fluorescents. They use rare earth phosphors for excellent color and warmth. New electronically ballasted CFLs don't flicker or hum.

Versatility

Compact fluorescent light bulbs can be applied nearly anywhere that incandescent lights are used. 3-way CFLs are also now available for lamps with 3-way settings. Dimmable Compact fluorescent light bulbs are also available for lights using a dimmer.



**Mayfield Electric &
Water Systems**

Contacts:

270-247-4661

www.mayfieldews.com

**301 E Broadway
Mayfield, KY 42066**

OFFICE HOURS:

**Monday thru Friday
7:00 AM to 4:30 PM**

**Mayfield Electric &
Water Systems'
BOARD MEMBERS**

Wesley K. Greer
Chairperson

Chris Kendrick
Vice Chairperson

Robert Barclay
Secretary-Treasurer

Nancy Barger
Member

Jana Adams
Member

Sam Boyd Neely, Jr.
Attorney

The electric plant board is made up of progressive community leaders and directs the management of MEWS.

The plant board consists of 5 members appointed by the Mayor and confirmed by the City Council.

In The Community: **GCHS Community Service Day**

GCHS Chemistry Teacher, Jeremy Krug, and GCHS Seniors- Alyson Wyatt, Abrahm Oliver, Kady Forsythe, and Nikki Walton-visited Mayfield Electric & Water Systems for their annual Community Service Day. While at MEWS, Mr. Krug and the students washed bucket trucks, equipment and service trucks. Thanks for your community service!!!



Follow Us On Twitter



Twitter is an online tool that helps connect businesses more effectively with the right audience at the right time. Businesses and organizations of all shapes and sizes are now using Twitter to stay connected to their customers. It can be used to quickly share information with people interested in your company and to build relationships with customers, partners and other people who care about your business.

Mayfield Electric and Water Systems invites you to follow us on Twitter to get minute-by-minute information about your utilities. Updates on power outages, water main breaks, traffic alerts, boil water advisories, tree-trimming and daily work schedules can be found on our twitter page.

To follow MEWS on Twitter, go to www.mayfieldews.com, scroll to the bottom of the homepage and click on the twitter icon. Or, you can search @MEWSPublic at www.twitter.com.

Getting To Know Us: Kelly Green

Kelly Green has called Mayfield home for all of her 40 years. She graduated from Murray State University Cum Laude in May 1994 with a Bachelor's degree in Business Management. Shortly after college she married her high school sweetheart Joe, with whom she has been married for 19 years. They have two beautiful and entertaining daughters, Emily (9) and Olivia (5). In Kelly's spare time she likes to play golf, swim, garden and scrapbook.



Kelly started working for Mayfield Electric & Water Systems in January 1999 as an accounting clerk. She was then promoted to Electric/Internet Accounting & Finance Manager in 2006 where she has seen much diversification at her public owned utility. Kelly takes great pride in being able to work with numbers very proficiently while still being a "people person". She worked in customer service for 10 years before coming to work at Mayfield Electric & Water Systems; therefore, she knows that without excellent customer service her job is not complete.



Energy Tips: Save on Cooling Costs

Staying cool in the heat can get expensive, especially when the summer temperatures get into full force. Use these tips to help become the biggest energy-saver on the block!

Install a Programmable Thermostat: Setting your cooling system 4-6 degrees warmer when you are not at home will cut 5-20% off your energy bill. This is a great upgrade that will pay back quickly. If you can't install a programmable one, try to remember to adjust your thermostat before you leave the house. You will notice the savings quickly!

Clean or Change AC Filters: Dirty air filters slow airflow and make the AC blower and cooling system work overtime. A dirty air filter could cost 7% more in energy costs! Change your central AC filter monthly. Use the day you receive your electric bill as a monthly reminder to change the filter.

Fix Leaks in AC Ducting: Check your duct work for cracks and air leaks in your crawl space or attic so this cool air is not wasted. This could be a tough do-it-yourself project to fix correctly, so you may contact an AC professional to seal the leaks efficiently.

Block Out the Sun: Roughly 30% of unwanted heat can come through your windows. Install shades, insulated curtains or tinted window film on the south- and west-facing windows to help save up to 7%.

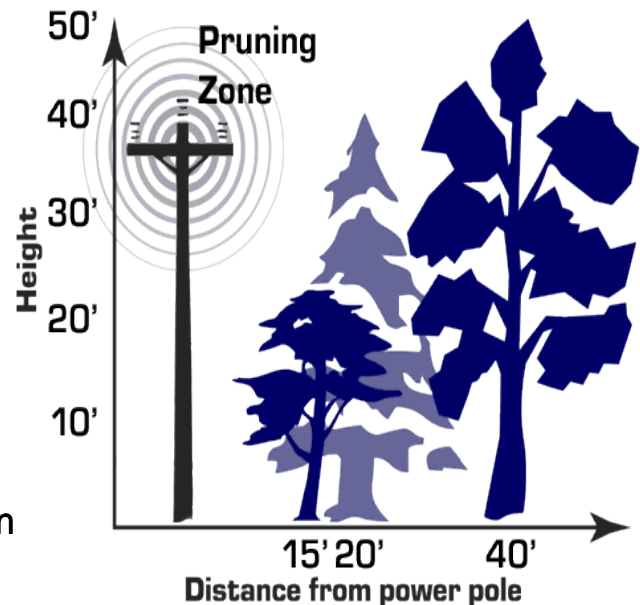
Use Ceiling Fans: Moving air keeps you cooler! You can set your thermostat higher while still being comfortable when using ceiling fans!

Look Up When Planting Trees

Large trees near power lines can pose serious safety concerns and problems in service reliability. Proper selection of a tree species for use near power lines will reduce hazards and the need for expensive, unsightly pruning or removal.

Please use these suggestions when planting trees:

- Do not plant trees within 15 ft of a line.
- Plant trees and shrubs that are 15-20 ft tall when mature, at least 15 ft from a line.
- Trees maturing at 20-40 ft in height should be planted at least 20 ft from a line.
- Trees that reach over 40 ft in height when mature should be planted at least 40 ft away from power lines and poles.



Employee Service Anniversaries

July, August & September

Marty Ivy	23
Brian Womble	22
Kevin Workman	22
Dusty Qualls	15
Kevin Leonard	14
Jeff Kelley	12
Chris Cope	12
Todd Whitis	11
Jason Kendall	10
Van Allen	9
Miranda Evans	4

OFFICE CLOSINGS:

Independence Day

July 4, 2013

Labor Day

September 2, 2013



Mayfield Electric & Water Systems encourages the use of CFL bulbs, but wants to remind our customers that CFLs contain very small traces of mercury and should not be disposed of in your regular garbage.

Bring in your expired bulb and we will recycle it for FREE!